

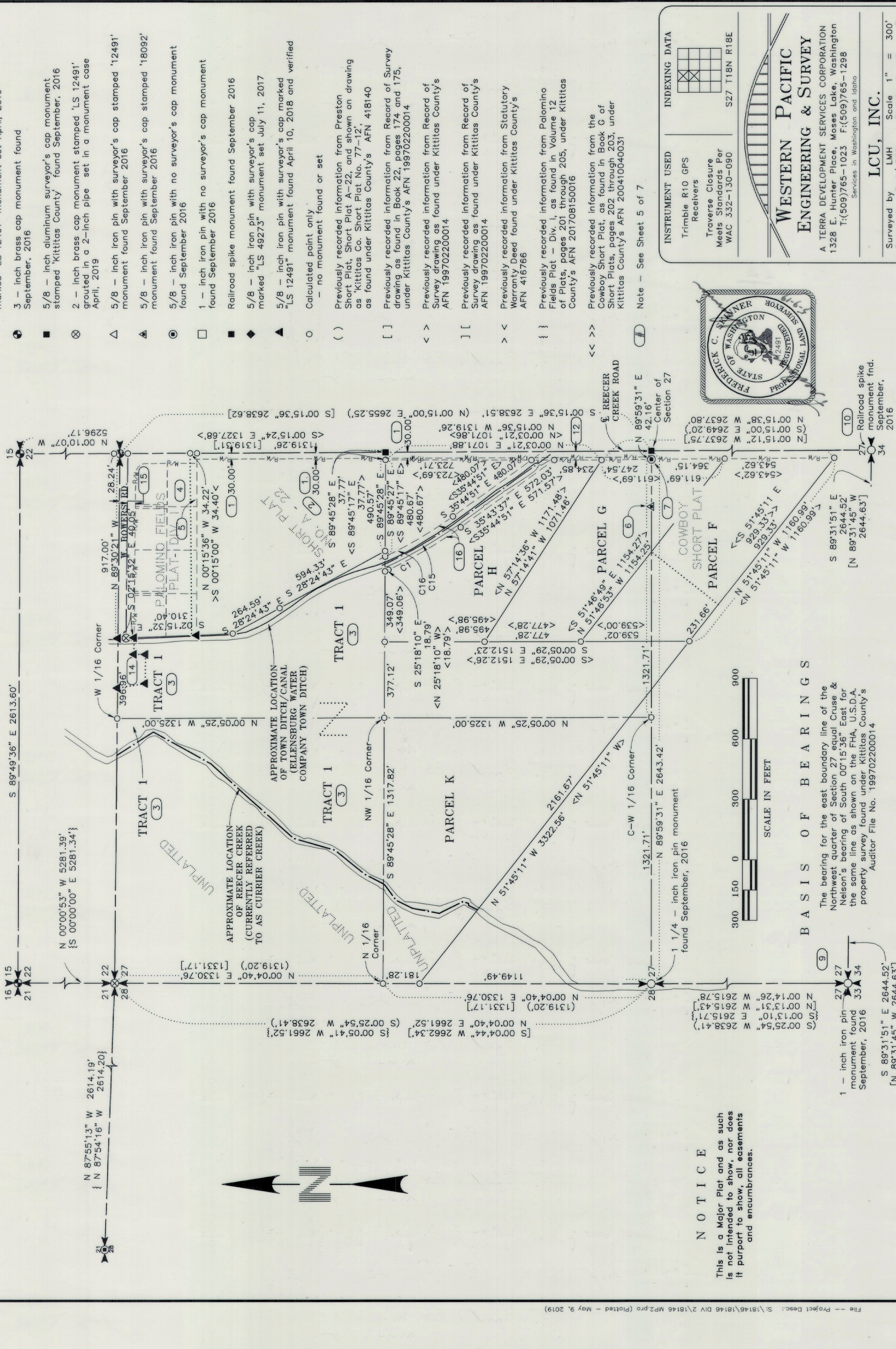
# PALOMINO FIELDS PLAT -- DIVISION II

## A PTN. OF THE E 1/2 OF THE NW 1/4 OF SECTION 27, TOWNSHIP 18 NORTH, RANGE 18 EAST, W.M.

### KITITAS COUNTY, WASHINGTON

#### ORIGINAL OWNERSHIP PARCEL MAP

Receiving No. ....  
LPF - 19-00003  
LP - 07-00031  
181827

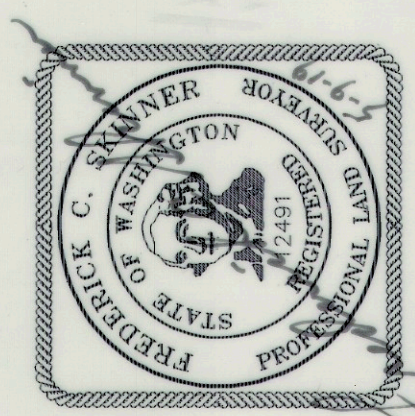
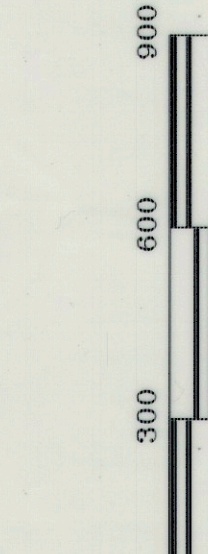


LEGEN D

- 5/8 - inch iron pin with surveyor's cap marked "LS 12491" monument set April, 2019
- ⊙ 3 - inch brass cap monument found September, 2016
- 5/8 - inch aluminum surveyor's cap monument stamped 'Kittitas County' found September, 2016
- ⊗ 2 - inch brass cap monument stamped 'LS 12491' grouted in a 2-inch pipe set in a monument case April, 2019
- △ 5/8 - inch iron pin with surveyor's cap stamped '12491' monument found September 2016
- ▲ 5/8 - inch iron pin with surveyor's cap stamped '18092' monument found September 2016
- ⊙ 5/8 - inch iron pin with no surveyor's cap monument found September 2016
- 1 - inch iron pin with no surveyor's cap monument found September 2016
- Railroad spike monument found September 2016
- ◆ 5/8 - inch iron pin with surveyor's cap marked "LS 49273" monument set July 11, 2017
- ▲ 5/8 - inch iron pin with surveyor's cap marked "LS 12491" monument found April 10, 2018 and verified
- Calculated point only
- ( ) - no monument found or set
- ( ) Previously recorded information from Preston Short Plat, Short Plat A-22, and shown on drawing as 'Kittitas Co. Short Plat No. 77-12', as found under Kittitas County's AFN 418140
- [ ] Previously recorded information from Record of Survey drawing as found in Book 22, pages 174 and 175, under Kittitas County's AFN 199702200014
- < > Previously recorded information from Record of Survey drawing as found under Kittitas County's AFN 199702200014
- ] [ Previously recorded information from Record of Survey drawing as found under Kittitas County's AFN 199702200014
- < > Previously recorded information from Statutory Warranty Deed found under Kittitas County's AFN 416766
- { } Previously recorded information from Palomino Fields Plat - Div. I, as found in Volume 12 of Plats, pages 201 through 205, under Kittitas County's AFN 2017081500016
- << >> Previously recorded information from the Cowboy Short Plat, as found in Book G of Short Plats, pages 202 through 203, under Kittitas County's AFN 2004100400031
- # Note - See Sheet 5 of 7

**NOTICE**  
This is a Major Plat and as such is not intended to show, nor does it purport to show, all easements and encumbrances.

**BASIS OF BEARINGS**  
The bearing for the east boundary line of the Northwest quarter of Section 27 equal Cruse & Nelson's bearing of South 00°15'36" East for the same line as shown on the FHA, U.S.D.A. property survey found under Kittitas County's Auditor File No. 199702200014



**WESTERN PACIFIC ENGINEERING & SURVEY**  
A TERRA DEVELOPMENT SERVICES CORPORATION  
1328 E. Hunter Place, Moses Lake, Washington  
T:(509)765-1023 F:(509)765-1298  
Services in Washington and Idaho

**LCU, INC.**  
Surveyed by LMH Scale 1" = 300'  
Drawn by Tml/ FCS Sheet 4 of 7  
Checked by FCS Project No. 18146

**INDEXING DATA**

INSTRUMENT USED	Trimble R10 GPS Receivers
Traverse Closure	Meets Standards Per WAC 332-130-090
S27 T18N R18E	